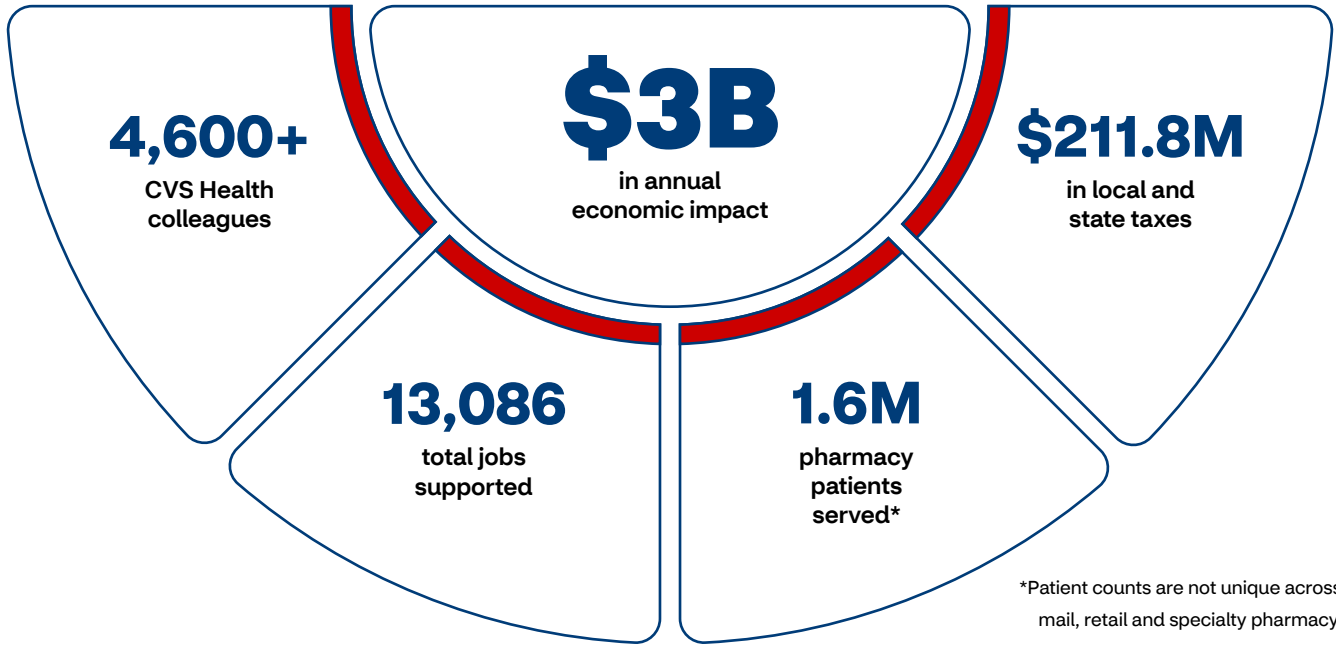




Investing in Health, Growing Local Communities

CVS Health's Annual Impact in Missouri



With 202 locations, CVS Health is bringing high-quality and affordable care to Missouri communities, improving people's health and driving economic growth.

Economic Impact

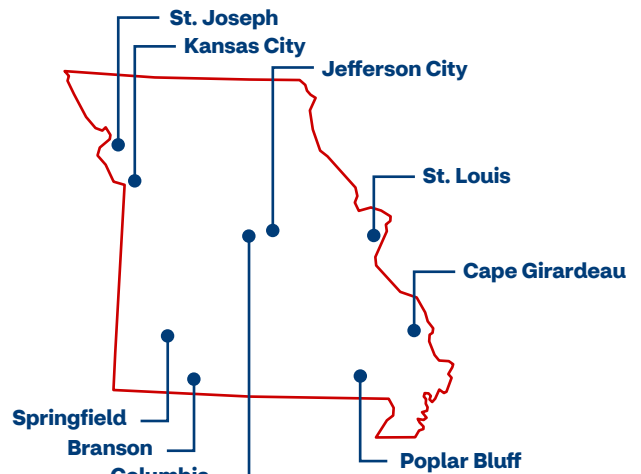
CVS Health's operations in Missouri generated an economic impact of \$3B in FY24. This includes a direct impact of \$1.7B, \$616M indirect and \$708.8M induced.

\$3 Billion
in Economic Impact

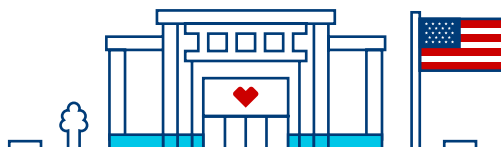
\$1.7B	Direct
\$616M	Indirect
\$708.8M	Induced

Source: Parker Strategy Group using data from CVS Health in IMPLAN

With multiple locations and prescription delivery services, CVS Health proudly serves patients and communities throughout Missouri.



*Map shows a sample of CVS Health sites, not a complete list of all operations or pharmacies.





Investing in Health, Growing Local Communities CVS Health's Annual Impact in Missouri

Generating Labor Income

CVS Health generated \$768.5M in total labor income in Missouri (\$348M direct, \$192.8M indirect and \$227.7M induced) in FY24.

\$768.5 Million
in Labor Income

\$348M	Direct
\$192.8M	Indirect
\$227.7M	Induced

Source: Parker Strategy Group using data from CVS Health in IMPLAN

Contributing to the Local and State Tax Base

CVS Health supported \$211.8M in state and local taxes in Missouri as a result of operations and capital spending in FY24. State (\$112.7M) and local taxes (\$99.1M) paid include employment-related, business and consumption-based taxes.

\$211.8 Million
in Local and State
Tax Impact

\$112.7M	State
\$99.1M	Local

Source: Parker Strategy Group using data from CVS Health in IMPLAN

Supporting and Sustaining Jobs

Overall, CVS Health supported 13,086 jobs in Missouri in FY24 (6,898 direct employees, 2,828 indirect and 3,359 induced).

13,086 Jobs
Supported
and Sustained

6,898 Jobs	Direct
2,828 Jobs	Indirect
3,359 Jobs	Induced

Source: Parker Strategy Group using data from CVS Health in IMPLAN

Giving Back to the Community

\$2.7 Million
in Community
Support

661
Volunteer
Hours

Source: CVS Health, 2024 Data

Methodology

The study is a snapshot of economic impact as of December 31, 2024, unless otherwise noted. Data used to complete the economic analysis was provided by CVS Health. Data supplied included operating expenditures, capital spending, pay and benefits, direct taxes paid and total employees. The colleague data used in the analysis of the report represents the sum total of all colleagues who were in the state at any time in 2024. Average number of CVS Health colleagues reflects a point-in-time estimate in 2024. Primary and secondary data was used to complete the input-output models in IMPLAN. Additional jobs include indirect employment created as a result of CVS Health's economic impact and induced employment as a result of household spending by CVS Health employees and employees of vendors. The CVS Health colleague and location data is as of January 1, 2025. Patient counts are not unique across mail, retail and specialty pharmacy. Numbers in this report are subject to rounding.

