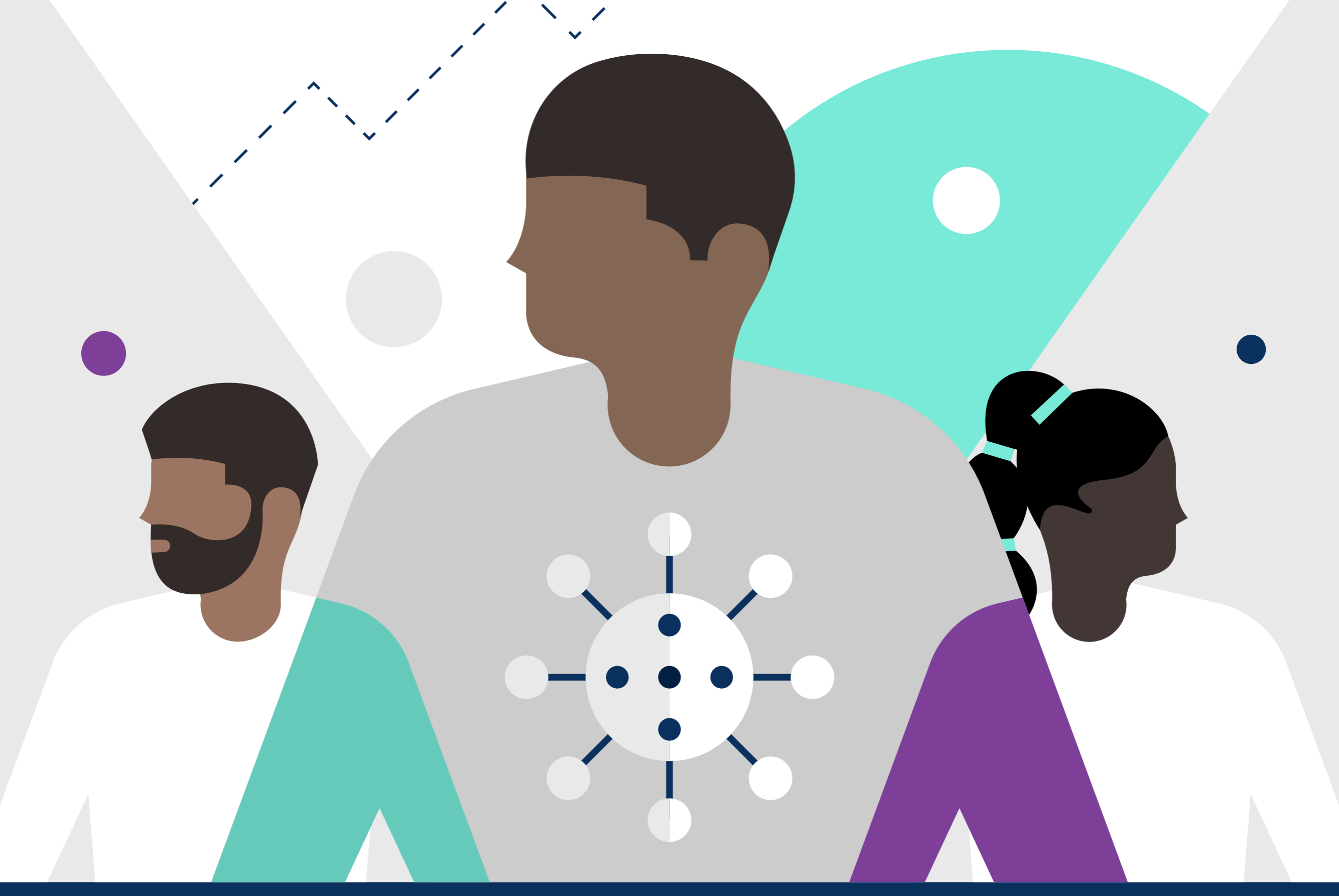


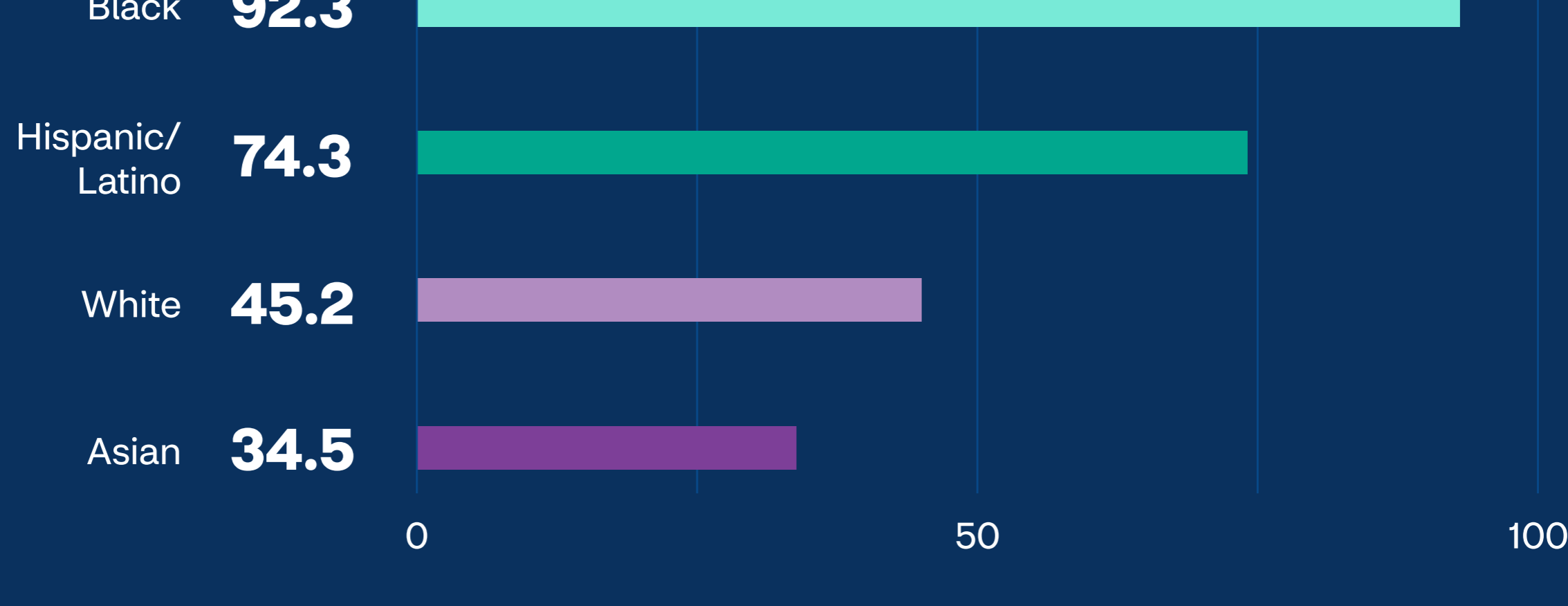
Health disparities, race and COVID-19 risks

As data surrounding COVID-19 continues to bring America's health disparities into greater focus, findings show Black people are being impacted at a disproportionate rate across the country.



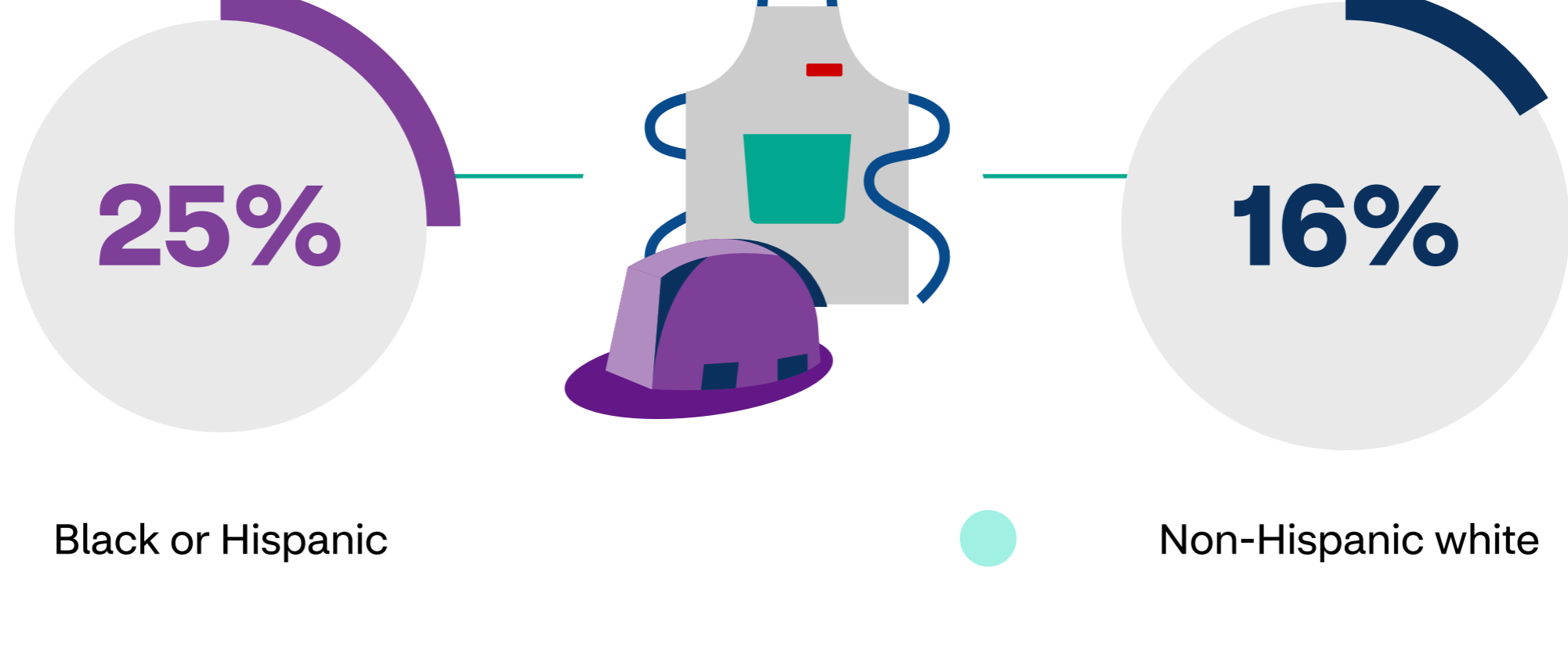
New York City COVID-19 deaths per 100,000 population by race*

*As of April 2020



Essential work

Nearly 25% of employed Black or Hispanic workers occupy service industry jobs compared to 16% of non-Hispanic whites.



Black people make up 12% of all employed workers in the U.S., but comprise 30% of licensed practical and licensed vocational nurses.



All employed workers



Licensed practical and licensed vocational nurses



Factors influencing racial and minority group health

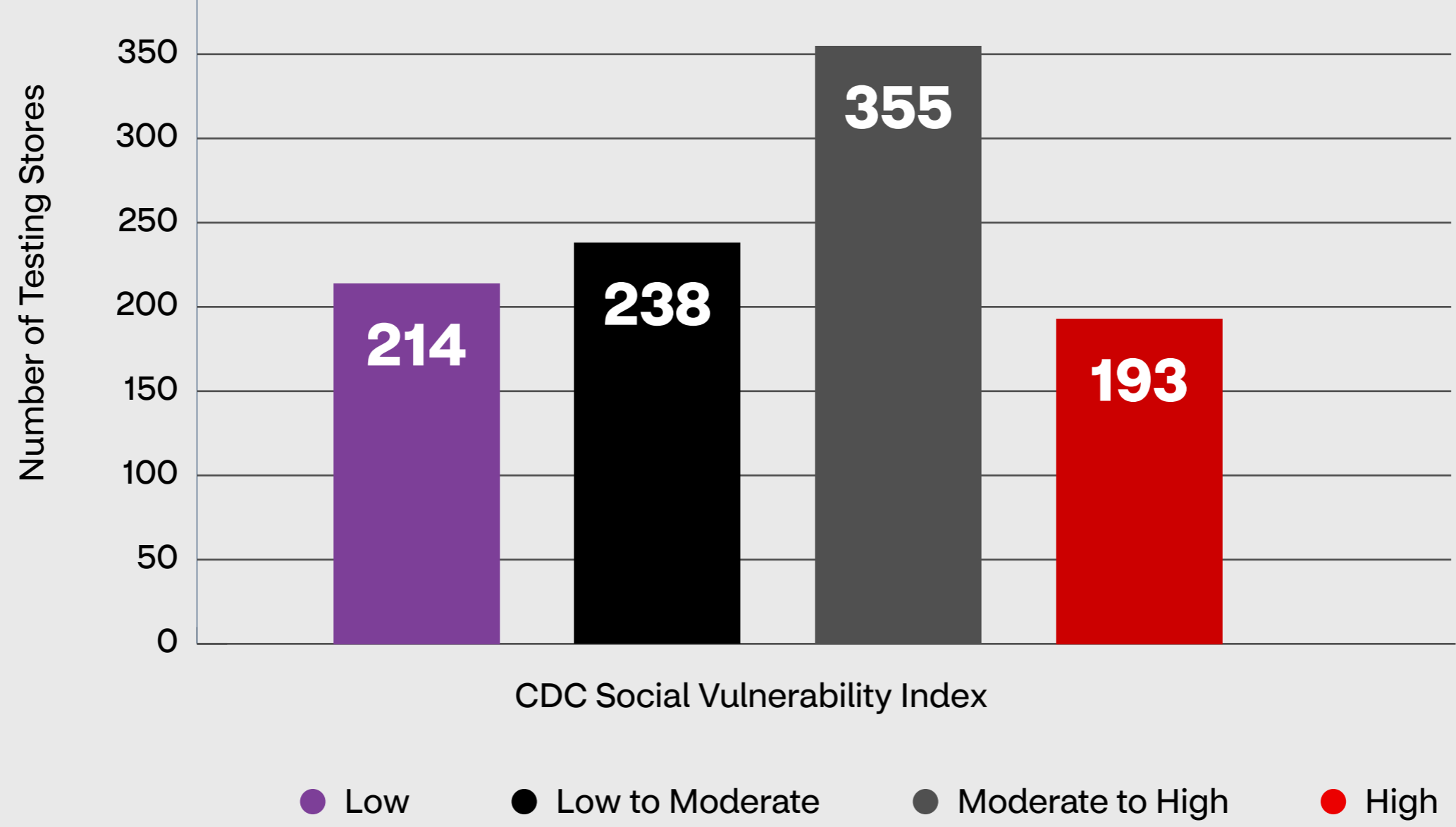


More than half of CVS Health's 1,400+ testing sites are located in counties that serve moderate to high needs communities.**

**As of June 2020, as measured by the CDC Social Vulnerability Index, which tracks a variety of census variables, including poverty, lack of access to transportation and crowded housing.

Number of CVS Health Testing Store Locations by CDC SVI

(By county level, as of May 2020)



Sources:

Centers for Disease Control (cdc.org)
City of New York (nyc.gov)
CVS Health (cvshealth.com)
U.S. Bureau of Labor Statistics

